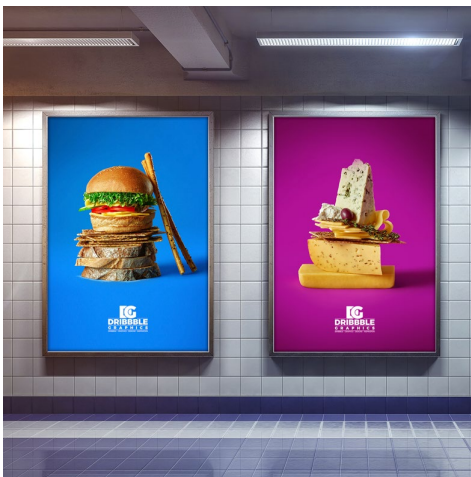




QM-SOLPPMRAD: Everyday matte polypropylene w/ removable adhesive

This 6 mil polypropylene, has good water and tear resistance. It's smooth matte, microporous top coating gives it the ability to reproduce rich, accurate color. With our easy to apply removable adhesive, this is an ideal product for indoor or outdoor mounted signage.



Benefits:

- Tear Resistant
- Water Resistant
- Non-Glare Matte Finish

Applications:

- POP Display
- Mounted Posters

Registered Latex Developer



TECHNICAL DATA: QM-SOLPPMRAD – EVERYDAY MATTE POLYPROPYLENE W/ REMOVABLE ADHESIVE

SURFACE FINISH:	Matte	WHITENESS:	120 (CIE Ganz)
BASE MATERIAL:	Polypropylene	OPACITY:	96
ADHESIVE MATERIAL:	Removable	GLOSS MEASUREMENT:	6 +/- 10% by angle of 60°
LINER MATERIAL:	PET	STORAGE:	Indoor 2 yrs. between 50-80°
LINER WEIGHT:	44 GSM +/- 10%	ROLL LENGTH:	100 Ft.
LINER CALIPER:	1 Mil +/- .5	ROLL WIDTHS:	36", 60"
FACE STOCK WEIGHT:	110 GSM +/- 10%	CORE:	3"
FACE STOCK CALIPER:	6 Mil +/- 1	PRINT SIDE:	Print Side Out
BRIGHTNESS:	102 (ISO Blue Whiteness)	INK RECOMENDATIONS:	ECO-SOLVENT LATEX UV



This media is designed for digital printing applications using OEM printers with their accompanying OEM ink sets. Although designed for all printers using the aforementioned OEM matching ink sets; actual results may vary depending on printer model, age, print design, environmental conditions, and other factors. Exposure of a print to atmospheric pollutants, or to temperature, humidity, and / or lighting extremes can result in fading, color shifting, or other visual changes. The ideal conditions for printing and storage are a temperature of 70°F ±5°F and relative humidity of 50% RH ±3% RH. Our wide format media is guaranteed against manufacturing flaws and defects and is designed to resist printer jams when used properly.